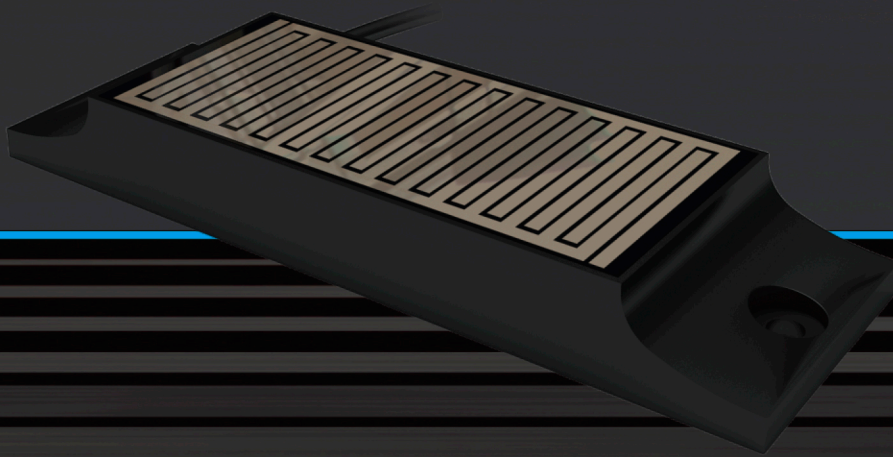


AC269-01

Rain Sensor



Working voltage

12-24VDC

Working current

8mA

Max output current

50mA

Max output voltage

36V

Cable length

≤50M

Working Temperature

-20°C to 60°C

Features

- ❖ Open drain layout possible to wire with main controller voltage range from 3.6V-24V
- ❖ Auto checking rain intensity in high sensitivity
- ❖ Waterproof design, suitable for outdoor usage